

# Con Edison Spill Preparedness & Response

June 3, 2026



**Presented by: Con Edison Environmental Field Team (EFT)**



# Agenda

- Con Edison Overview
- Spill Preparedness
- Spill Notifications
- Spill Response
- Dielectric Fluid-Filled Feeders
- Question & Answer



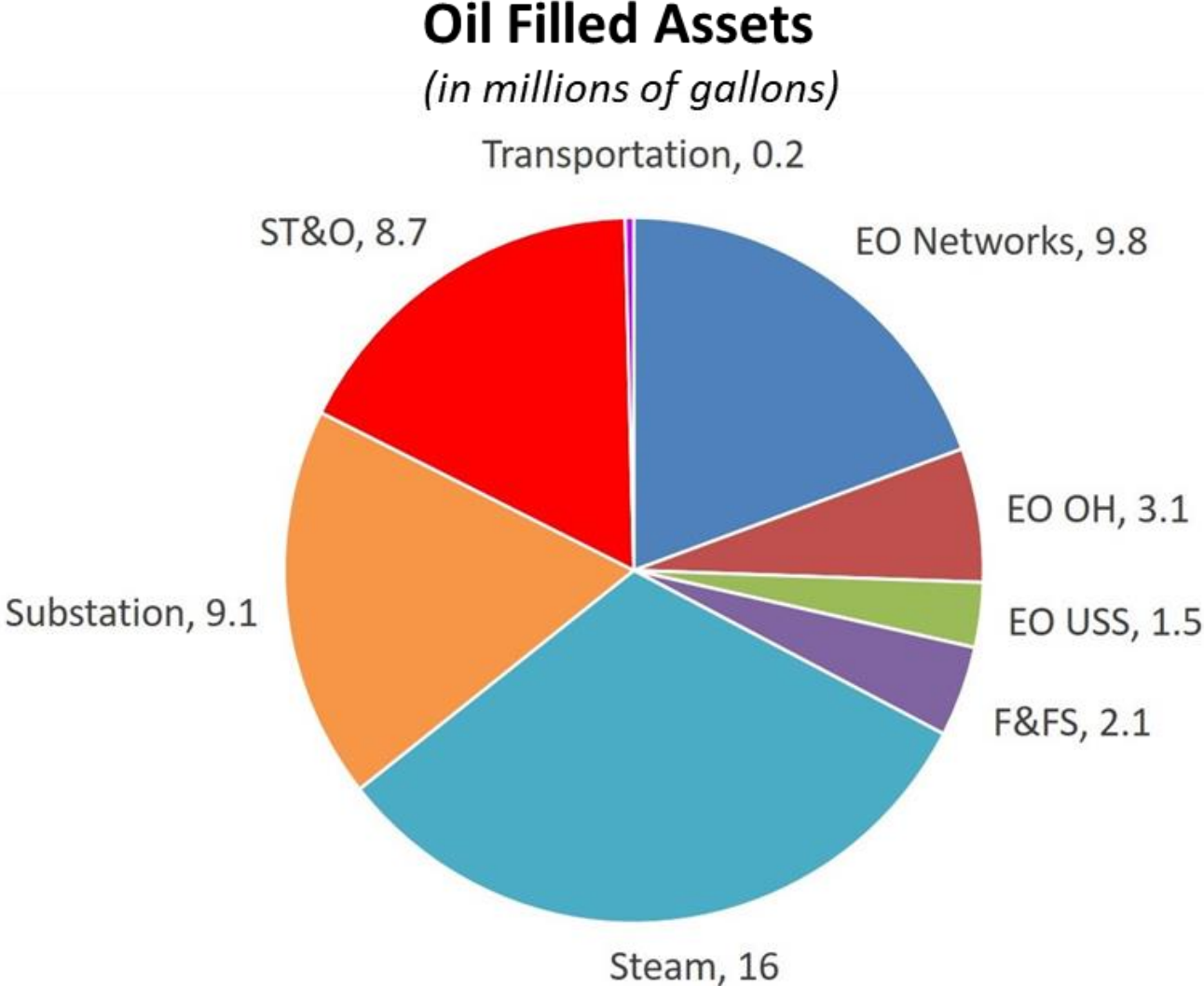
# Con Edison Overview

# Con Edison



- Founded in 1823
- 14,000+ Employees
- 93,000 miles of Underground Electric
- 7,200 miles of Gas Piping
- Approx. 27 billion pounds of steam generated each year
- Approx. 50 million gallons oil-filled assets

# CECONY Oil Capacity by Organization



# Steam Operations

- Plants generate steam
- Located adjacent to water for fuel deliveries via barge / tanker
- 59<sup>th</sup> St. uses a fuel barge for supply
- East River has 15 million gallons of storage capability



# Substation Operations

- Large power transformers
- PURS units designed for cable cooling



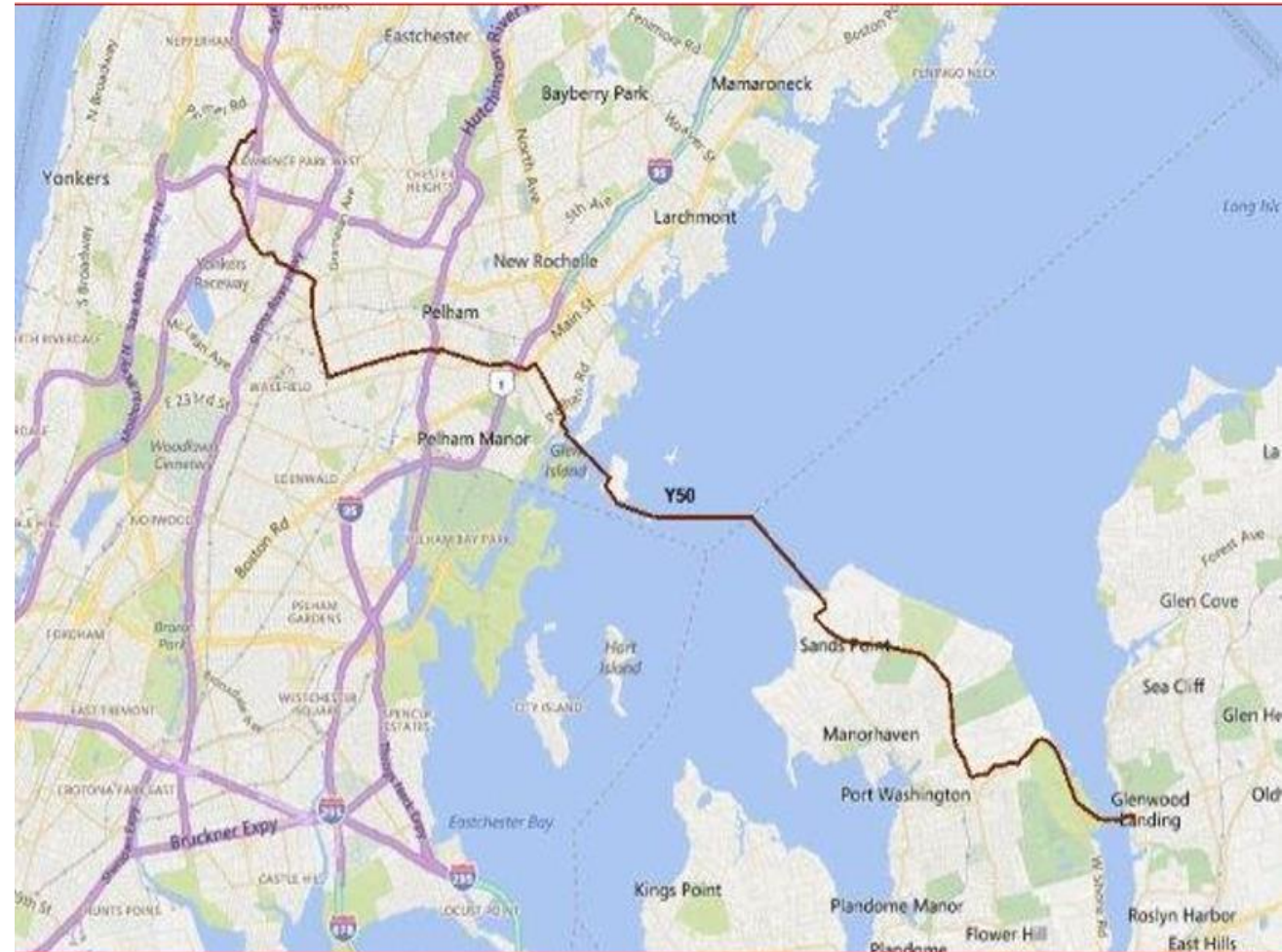
# Electric Operations

- Distribution Transformers
- Unit Substations



# Transmission Operations

- Dielectric fluid-filled feeders
- Perfluorocarbon Tracers



# **Spill Preparedness and Prevention**

# Oil Release to Waterway – Corporate Risk

## Risk Mitigation Strategy – Preparedness, Prevention, Response:

- Eliminate the release of oil,
- Prevent any oil from reaching a waterbody, and
- If a release of oil reaches a waterbody, minimize impact of the release.



# Release Prevention Strategies

- Con Ed utilizes controls across all commodities to manage the risk of oil release:
  - Secondary containment (moat upgrades)
  - Inspections
  - Various online leak detection systems
    - Large power transformers (*Dissolved gas*)
    - Transmission Feeder System (*USi*)
    - Distribution transformers (*Pressure, Temperature, Oil*)
  - Pipe enhancement projects (dielectric feeders)
  - Rectifiers (corrosion prevention)
  - Manhole modernization



# Environmental Field Team

- Field-focused team of environmental SMEs:
  - Perform **Quality Management Reviews** and **Operational Self-Assessments** of environmental programs
  - Establish Environmental **drills, training, and exercises**
  - Administrate the **Corporate Spill Management Team**
  - **On-call response** roster for significant environmental events
  - Perform **After Action Reviews** for significant environmental events
  - **Agency engagement** to foster collaboration and awareness

# Oil Program Management

- **Spill Prevention, Control and Countermeasure (SPCC) program** - proactive risk identification and the implementation of spill prevention and response measures.
- **Facility Response Plans (FRP)** - organize response resources, including equipment, trained personnel, and external support to enable timely deployment and reduced impact of potential spills.
- **Petroleum Bulk Storage (PBS) program** - establishes requirements for containment and handling of petroleum products to protect local ecosystems.
- **Off-Site Oil Spill Response Plan (OOSRPs)** – internal site-specific oil spill response strategies for Con Edison assets.

# Quality Management (QM) Reviews

- **Quality Management Reviews** of environmental programs to evaluate program management:
  - SPCC Program
  - Facility Response Plans
  - Waste Management,
  - Petroleum Bulk Storage
- Identify **best practices and solutions, cascade findings** across Con Ed organizations.



# Operational Self-Assessments (OSA)

- A structured process review of that:
  - actively identifies opportunities for improvement or, in some cases,
  - event precursors, to prevent significant performance shortfalls.
- Completed OSA for company Oil Water Separators
  - 86 Oil Water Separators (OWS) companywide
  - Focused on maintenance, inspection, recordkeeping
  - Identified enhancements to further mitigate risk



# OSA for OWSs

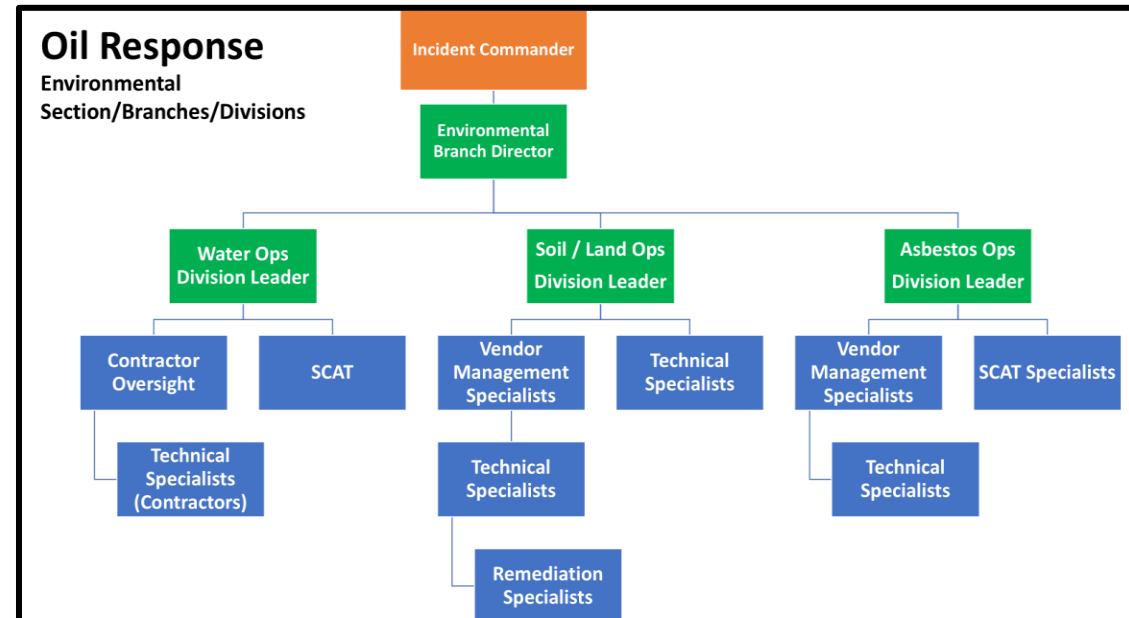
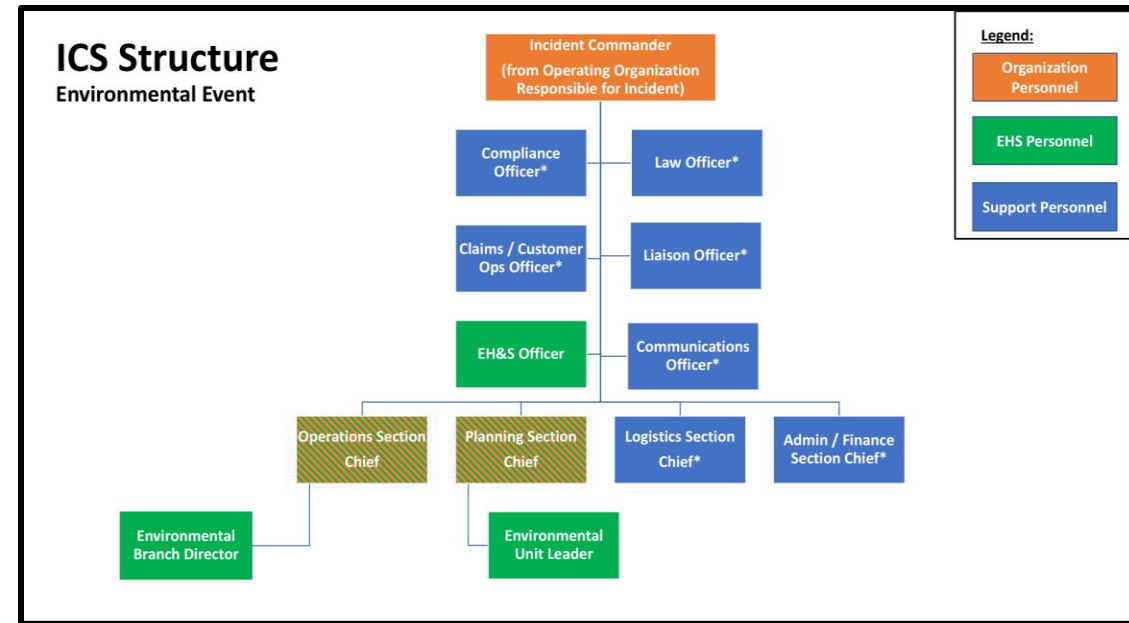


# Con Edison Spill Management Team

- The **EFT** administrates the Spill Management Team (**SMT**), working to ensure that the team is properly staffed, trained, and otherwise prepared to respond to a large-scale environmental event.
- Con Ed utilizes the Incident Command System (**ICS**) as the basic framework for planning and organizing responses to incidents and emergencies, including oil spills.

# SMT within the ICS structure

- Deployed during large-scale environmental responses
- Technical expertise in the Operations and Planning functions
- Team currently has ~50 people with position-specific training
- Administered by the Environmental Field Team



# Multidisciplinary Team (SMT)

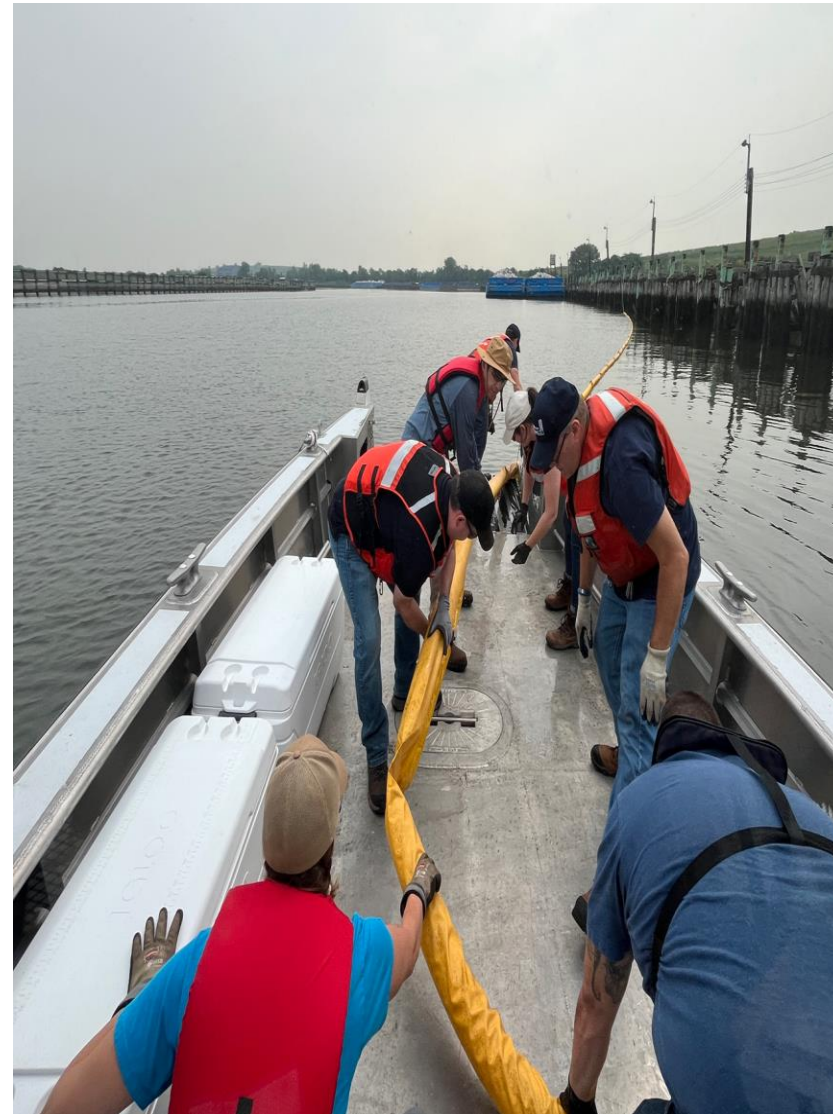


# **Preparedness: Environmental Training**

# Environmental Training

- The **EFT** builds and delivers training/drills for the SMT to ensure operational efficiency in spill response.
- **EFT** participates in organizational environmental drills to add value from an response SME standpoint (59<sup>th</sup> Street Gen Station OPA-90).
- The **EFT** also runs After-Action-Reviews (AAR) for environmental incidents to ensure that there is continuous improvement for environmental release responses.
- Close collaboration with OSRO partners

# Spill Response Training - SMT Boom Deployment



# Spill Response Training - SMT Skimmer Operation



# Spill Response Training – Receptors (ACP/ESI) & SCAT

NOAA ESI ATLAS in blue is a link to the ENVIRONMENTAL SENSITIVITY INDEX MAP. This is a modified version of the ESI map which combines multiple ESI maps to mirror precisely the ACP map.

MAP NUMBER in blue is a link to the ACP MAP where the sensitive area location is found.

SITE NAME in blue is a link to the SENSITIVE AREA CHART & OVERVIEW page which has a chart and a satellite image of the sensitive area.

NOAA ESI ATLAS

ACP MAP

SENSITIVE AREA CHART & OVERVIEW



# Exercises and Stakeholder Engagement

- Pro-active engagement with regulatory agencies
  - Informational tours
  - Training
  - Exercises and Drills



# Stakeholder Engagement



# Spill Notifications

# Spill Notifications to the EH&S Control Desk

- All spills called into EH&S Control Desk
  - 24/7 Environmental Desk
  - Environmental Management Information System
- EH&S Desk reports spills to external agencies
  - National Response Center – USCG/EPA
  - NYS DEC
  - NYC DEP
  - Westchester DOH
- Internal Notifications and Mobilization(s)
- Provides response data to field crews



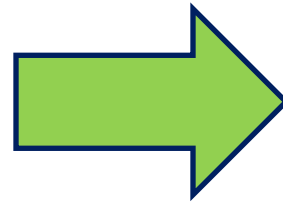
# Prompt Reporting and Timely Execution



**212-580-8383**  
**EH&S Control Desk**  
Employees and contactors must call the EH&S Control Desk to report EH&S incidents, including:

- Injuries
- Illnesses
- Oil or chemical spills
- Motor vehicle collisions

Continue to contact local Control Centers for operational issues, and EH&S Operations Support for more information.



# Spill Response

# Oil Spill Response

- Rapid Response (multiple organizations)
- Response Plans (SPCC, OOSRP, FRP)
- Goal is to minimize environmental impact
- Utilizes Incident Command Structure

**Control** → **Contain** → **Clean**



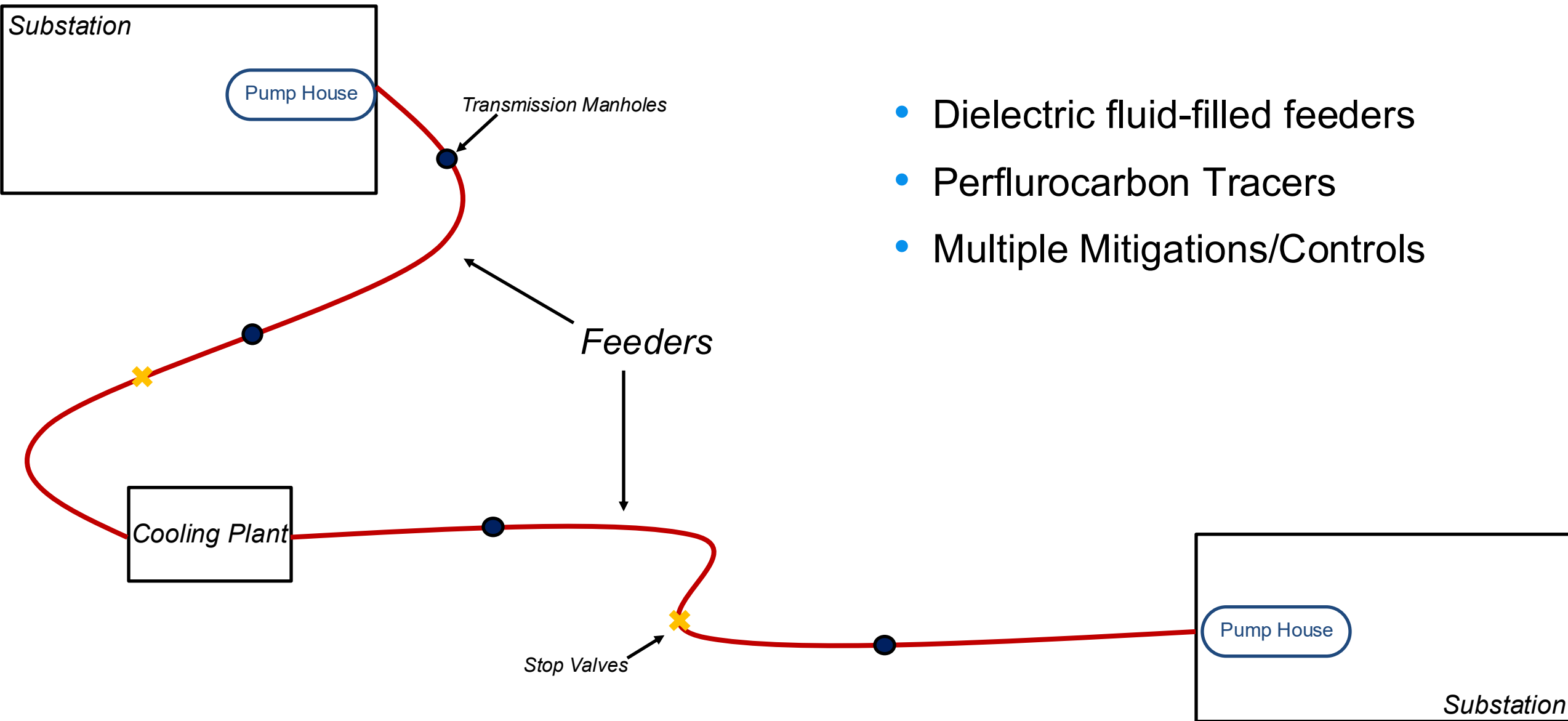
# Oil Spill Response

- Resources mobilized to contain and control the spill
- First Responders (Company forces)
  - Operating organizations / Support Organizations
    - Control spill – Clamping, valving, equipment repair, etc.
  - EH&S personnel
    - Contain spill – berms, dikes, drain covers
    - Establish control zones
- Site Impact Assessment
  - Establish ICS
- Additional resources
  - Oil Spill Response Organizations
  - On-land environmental contractors
  - Spill Management Team



# **Dielectric Fluid Filled Feeders**

# Transmission Operations



- Dielectric fluid-filled feeders
- Perfluorocarbon Tracers
- Multiple Mitigations/Controls

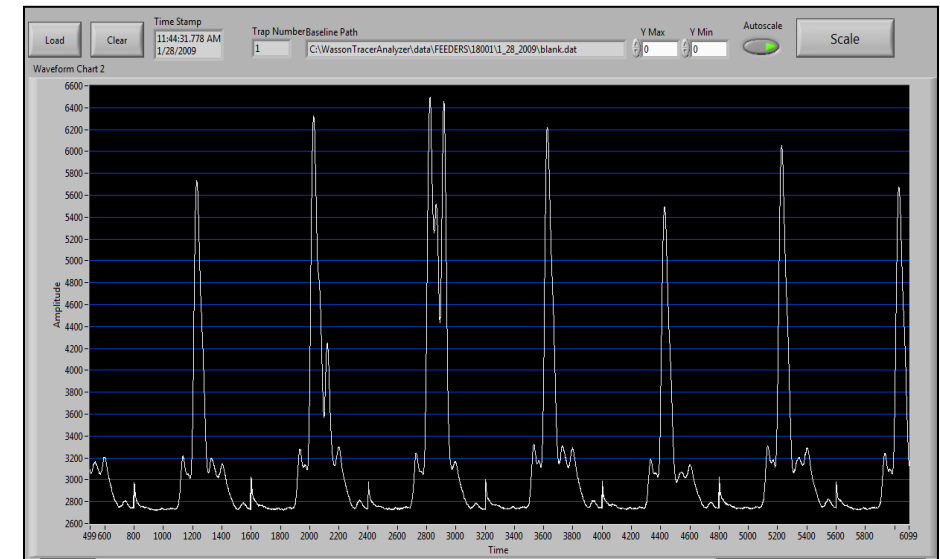
# Dielectric Fluid System – Mitigations and Controls

- Cathodic Protection
- Online Leak Detection System
  - USi
  - Dielectric Engineers
- Pipe Enhancement
- Manhole modernization
- Inspections and preventative maintenance
- Perfluorocarbon tracer for leak locating

# Leak Locating

## Perfluorocarbon Tracer (PFT) Vans

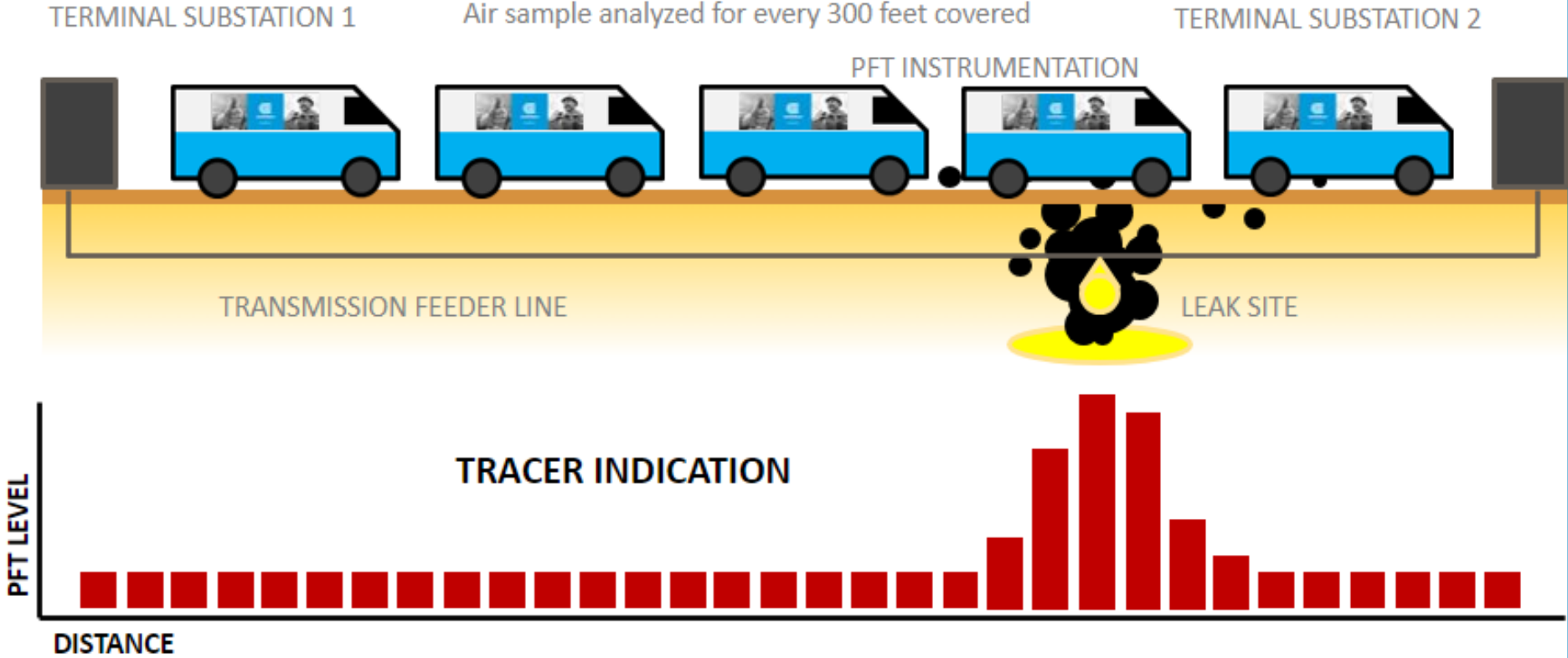
- Deployed for leak search
- Specialized for Mobile Leak Detection
- Con Edison leader in this space



# Feeder Leak Locating

## PATROL PROCEDURE

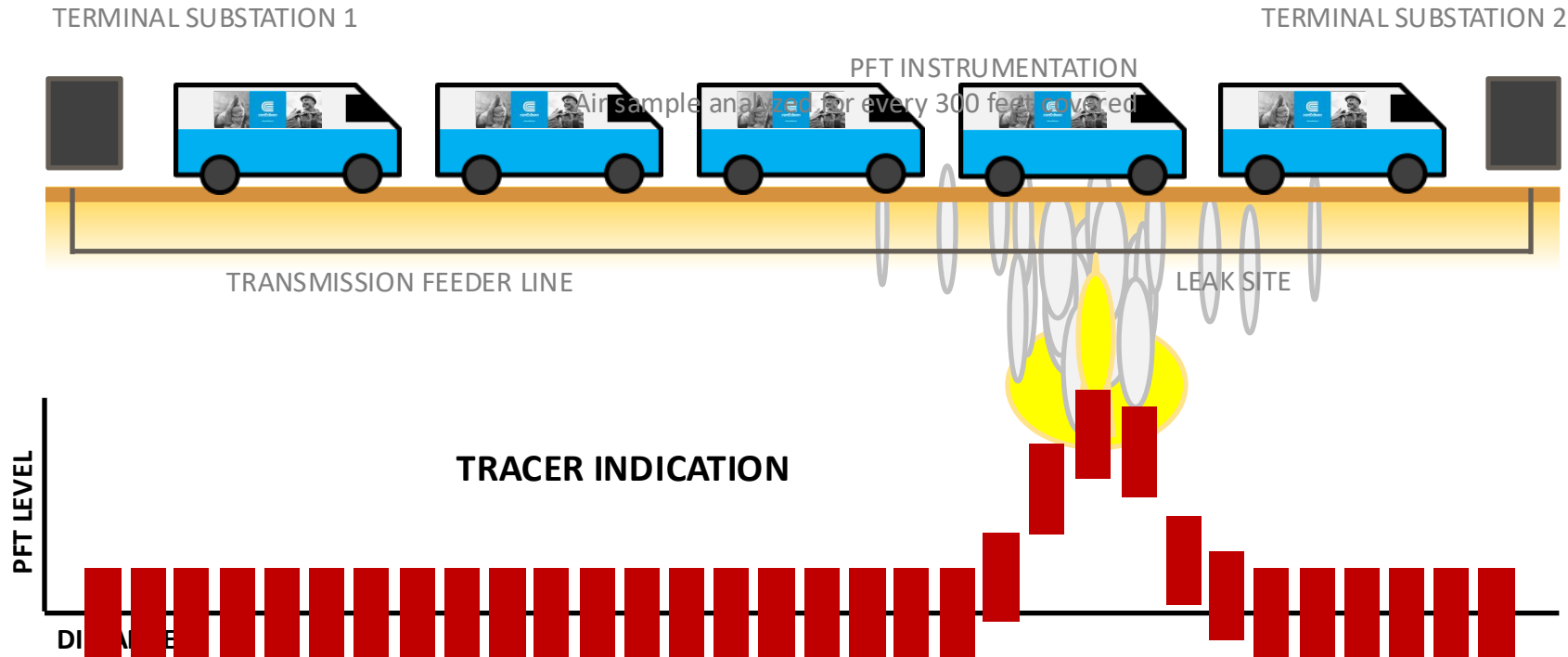
*Identify General Leak Area*



# Feeder Leak Locating with PFT

## PATROL PROCEDURE

*Identify General Leak Area*

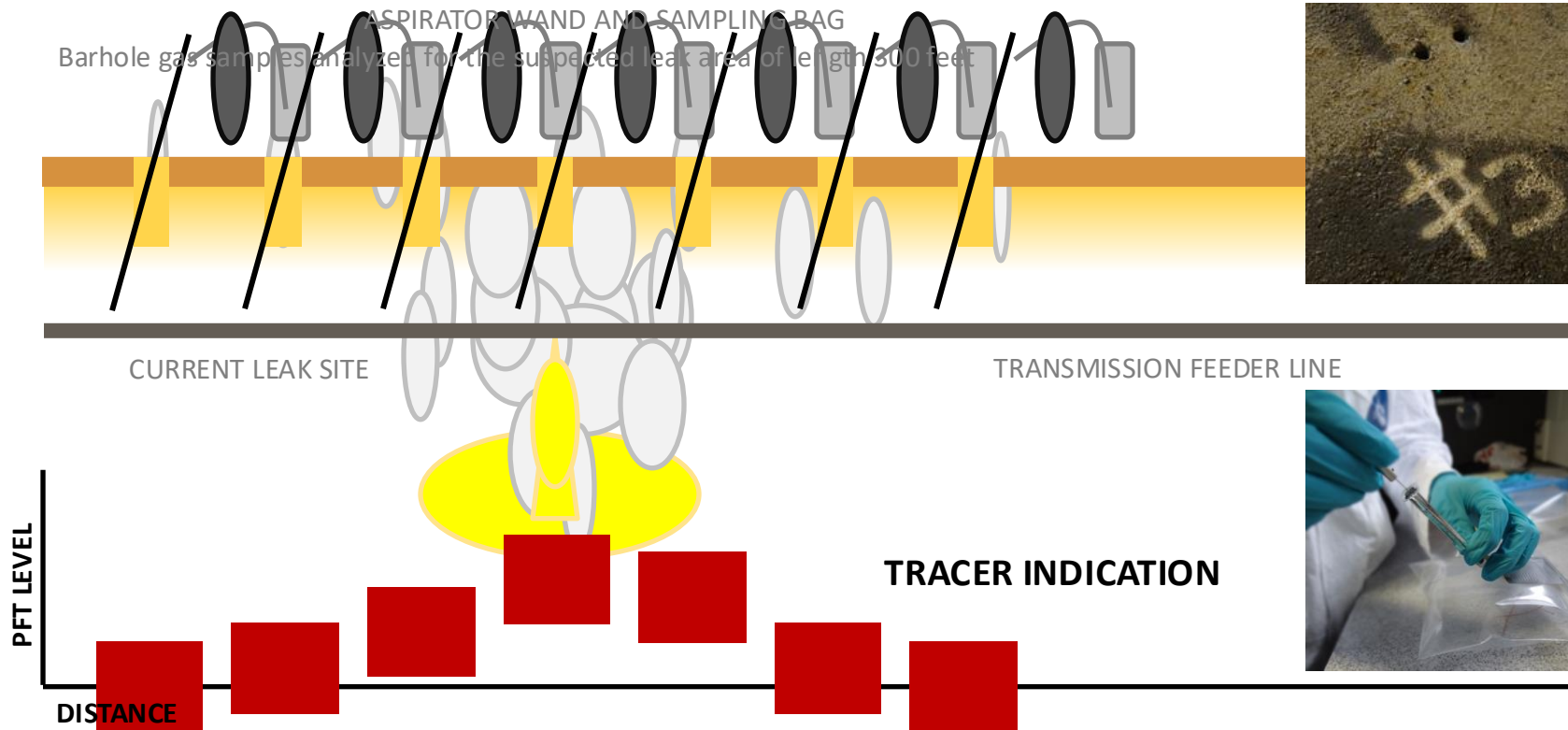


# Feeder Leak Locating with Barholes

## FEEDER LEAK SEARCH PROGRAM

### BARHOLE PROCEDURE

*Pinpoint Specific Leak Area*

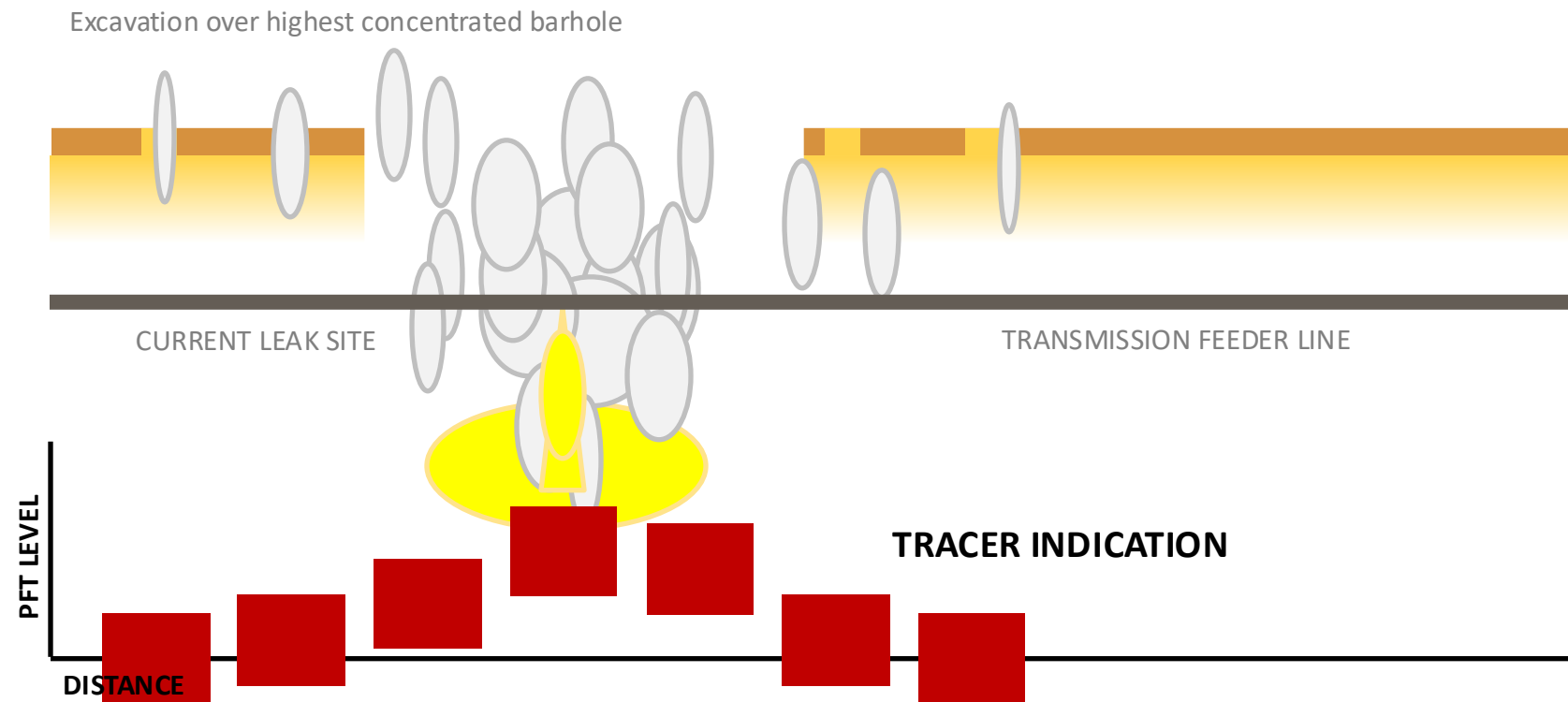


# Feeder Leak Locating with Barholes

## FEEDER LEAK SEARCH PROGRAM

### BARHOLE PROCEDURE

*Pinpoint Specific Leak Area*





Thank You!



200  
years